



ALICE2 - RedCLARA

Luis A. Núñez and Ana C. Osorio
Academic Relations

ALICE2 Meeting
June 23, 2011
Tegucigalpa, Honduras



This project is funded
by the European Union

A project implemented
by CLARA



CLARA Identified areas for possible VRC

Health
Materials Technologies
ICT (e-Government)
ICT (Grids)
ICT (Digital Libraries)
**Energy Technologies
(Renewable Energies)**
Food
Water
Social Sciences
Biotechnologies
Astronomy
Education
Natural Disasters
Cultural heritage (Archaeology and Immaterial Patrimony)



Thematic Areas of scientific papers published by Latin-American researchers during 2000-2008

Direct inquiry to the NREN of CLARA member countries

Comparative analysis taken from 51 thematic networks established by the Ibero American Program on S&T for Development, CYTED,



The strategic approach...

- **Identify most relevant research areas for LA.**
- **Better knowledge of groups by several means:** personal visits, participation on their meetings, inviting them to RedCLARA workshops.
- **Create a Data Base on research groups**
 - *Global search performed by a documentalist funded by the project reported 108 research groups*
 - *Agreements with CYTED, ARTCA, ALFA, CONACyT and other agencies is permitting to identify and to promote more communities*
- **GISELA and CHAIN projects to provide regional computer power**
- **Three new IDB communities:** *Seismology/Tsunami alert, Health/Tropical Diseases, Renewable Energy/Bio-fuels*
- **Cases of Study: LAGO and MapaD2**



The strategy is regional and subregional

- With two most mature countries (mx, br) promoting user communities activities.
 - Thematic virtual days
 - Community workshop (Astronomy/HEP)
 - User training-trainer Workshops
- With two mature countries (co, cl) promoting support communities activities.
 - Advanced Computing operation support and CA
 - Technical staff/taskforce
 - Advanced Computing Application support/migration
- With four mature countries (mx, br, co, cl) for external funding
- With the starting/developing countries (pa, cr, ec, ve cu)+(pe, ar, uy)
 - Decision maker days
 - User training workshop
 - Business plan/sustainability workshop



RedCLARA Communities



1. LACXSER (LATinoamerican Colaboratory of eXperimental Software Engineering Research)

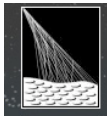


2. ReLANS (Red Latinoamericana de Nanotecnología y Sociedad)

3. MAYA (Red de Microorganismos, Agricultura y Alimentos)



4. MCISur (Manejo Costero Integrado del Cono Sur)



5. LAGO (Large Aperture Gamma Ray Burst Observatory)

6. MAPA D2 (Mapa e Programa de artes em dança digital)



7. LACLO (Latin American Community of Learning Objects)

8. CoLaBoRa (Comunidad Latinoamericana de Bibliotecas y Repositorios Digitales)



9. URDIMBRE (Research of the impact of TIC in education)



ComCLARA2010



ComCLARA2011

1. LAGO (Large Aperture Gamma Ray Burst Observatory)

2. MAPA D2 (Mapa e Programa de artes em dança digital)

3. LACLO (Latin American Community of Learning Objects)

4. CoLaBoRa (Comunidad Latinoamericana de Bibliotecas y Repositorios Digitales)

5. FLU-CAP Programa de Influenza para Centroamérica y Panamá

6. TIC en FID Formación Docente Inicial

7. ACHALAI Red internacional de recuperación del patrimonio inmaterial de tradiciones musicales

8. Grid Computación Científica y de Alto Rendimiento

9. ARCU-RED Comunidad de arte y cultura en la red

10. IPOL-LA Image Processing Online Latin America

11. CLARISE Comunidad Latinoamericana Abierta Regional de Investigación Social y Educativa

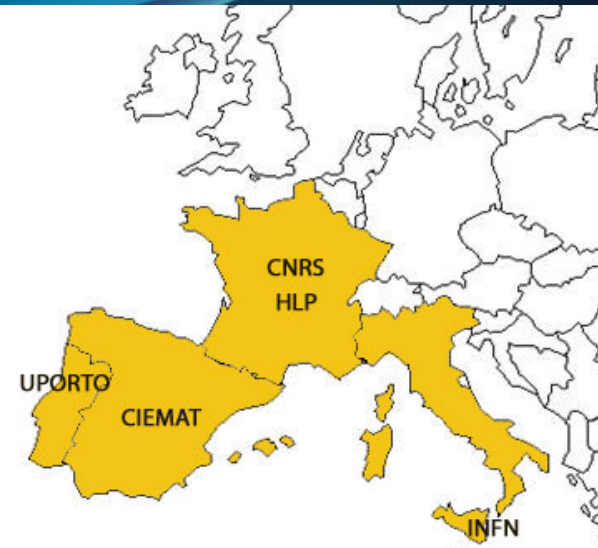
12. Latin IDE Comunidad Latinoamericana de Infraestructura de Datos Espaciales

13. CLIC Comunidad Latinoamericana de Investigación y Construcción de Conocimiento



GISELA Countries & Partners

15 Countries (11 in Latin America)
 19 Partners (14 in Latin America)
 12 Third Parties (11 in Latin America)



Europe

Italy	INFN – Catania
France	CNRS, HLP
Portugal	U.PORTO
Spain	CIEMAT (Coord. Institution)

Latin America and the Caribbean

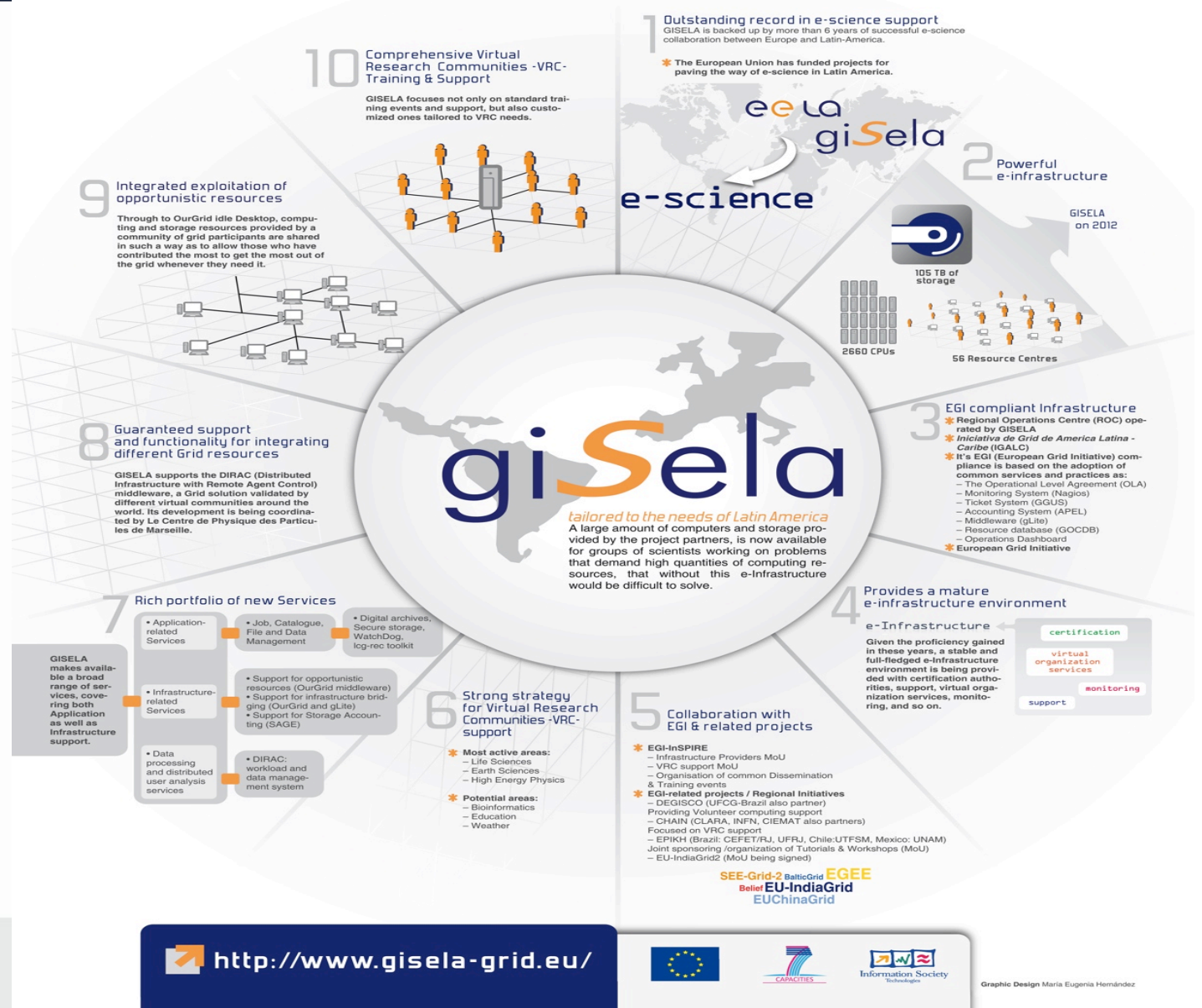
Argentina	INNOVA-T
Brazil	UFRJ, UFCG
Chile	REUNA
Colombia	UNIANDES
Cuba	CUBAENERGIA
Ecuador	CEDIA
International	CLARA
Mexico	CUDI, UNAM
Panama	CIDETYS
Peru	RAAP
Uruguay	UdelaR
Venezuela	ULA

The GISELA spirit is not anymore to consider Institutions, but rather representatives of JRU / NGI, with the advantage to “accept” de facto all JRU / NGI members.

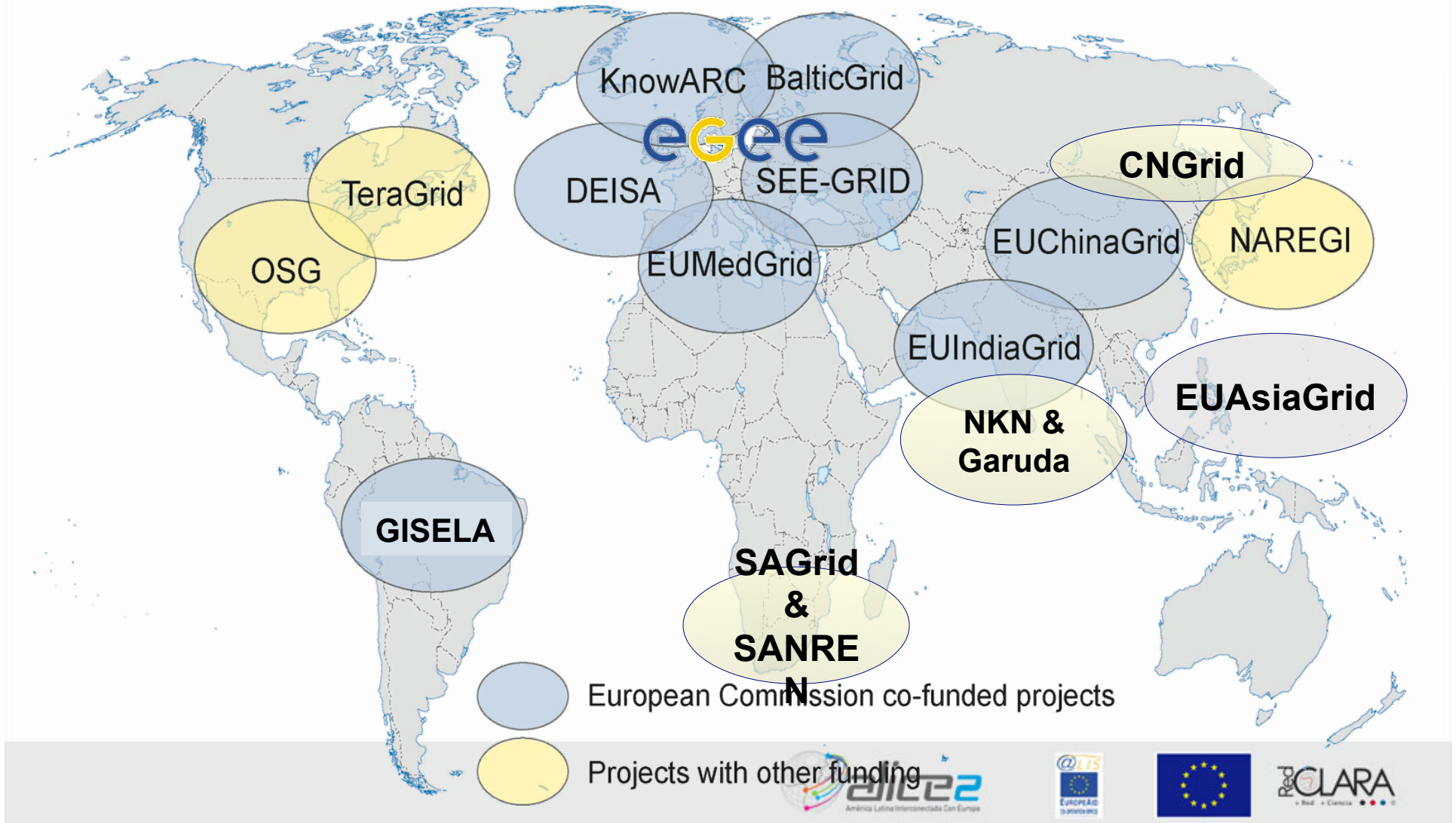


Grid Initiative for e-Science virtual research communities in Europe and Latin America

10 Good Reasons to become a GISELA User



Globalisation of Grid Infrastructures



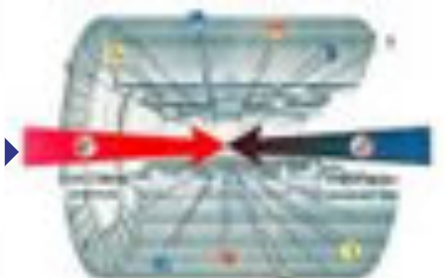


Why ? - To extend the ERA (European Research Area)

e-
Infrastructures
support wide
geographically
distributed
communities

enhance
international
collaboration of
scientists

promote
collaboration in
other fields.



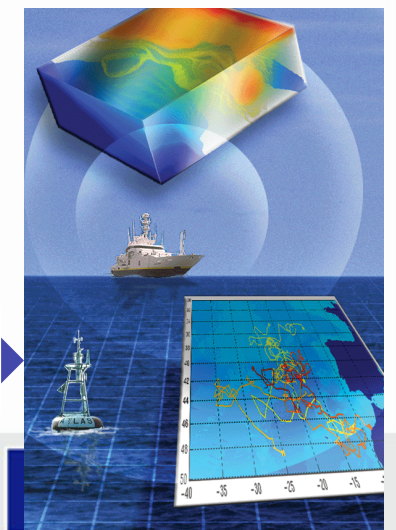
Grids and networks
allow the access of
many researchers
to scientific
resources
(laboratories and
data)

Disparity can be reduced and larger
participation and contributions to high
quality research.



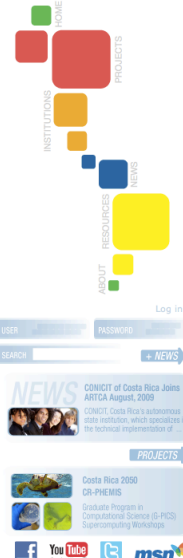
The e-Infrastructures promote
the usage of network
connectivity and stimulate
scientific and technical
development of countries

contribute to fight the digital
divide and brain drain.



Other important alliances

- Open Science Grid <http://www.opensciencegrid.org/>
- Texas Advance Computing Center <http://www.tacc.utexas.edu>
- ARTCA (*Advanced Research and Technology Collaboratory for the Americas* <http://www.artcaonline.org/>)
- Laboratório Nacional de Computação Científica (LNCC) BR
- York University CA
- Supercomputing Center, Universidad Nacional Autónoma de México (UNAM) MX
- Consejo Nacional de CyT CR





¡GRACIAS!

